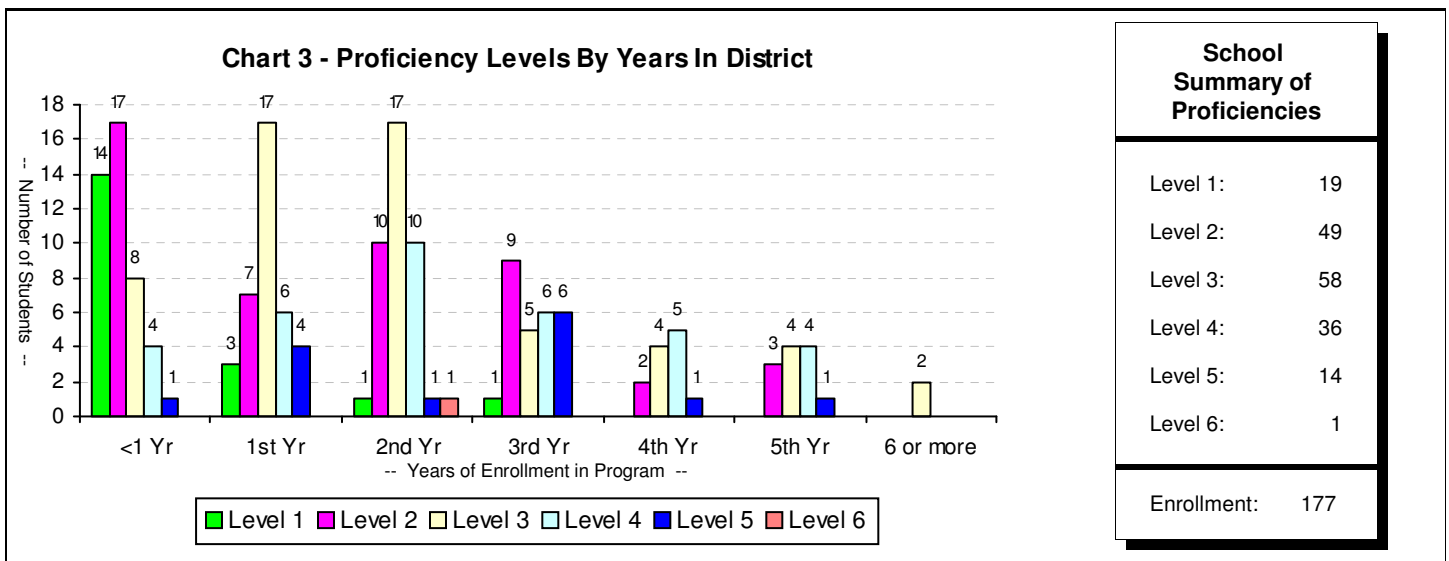
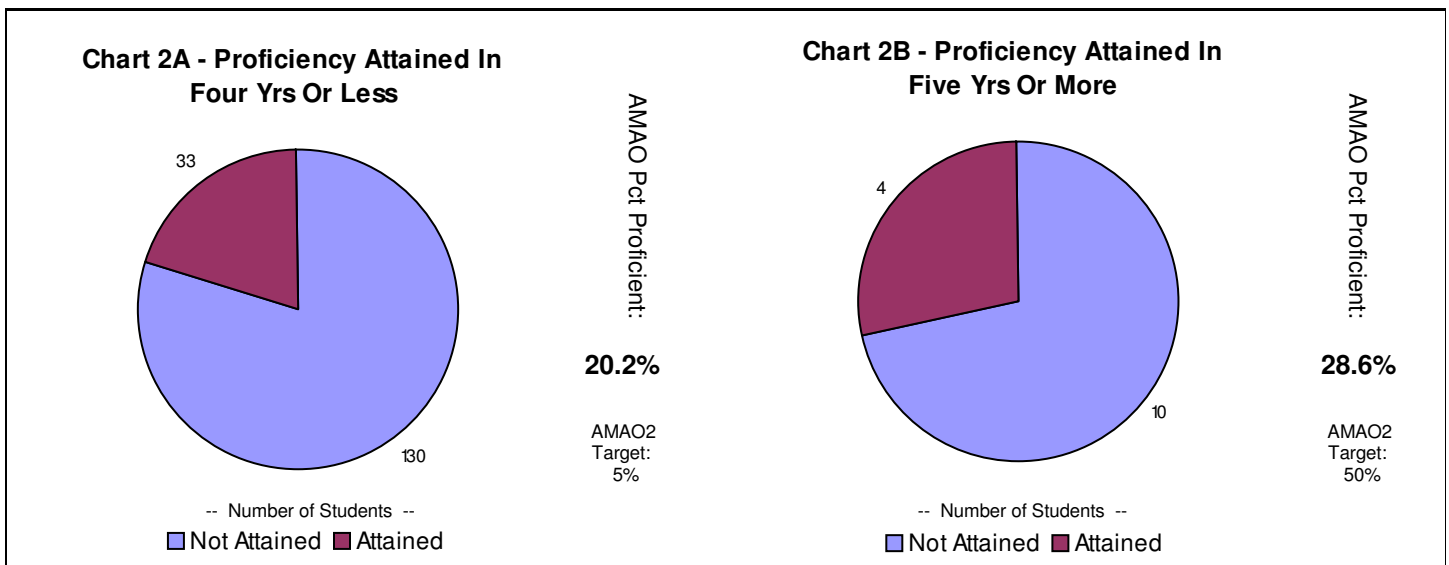
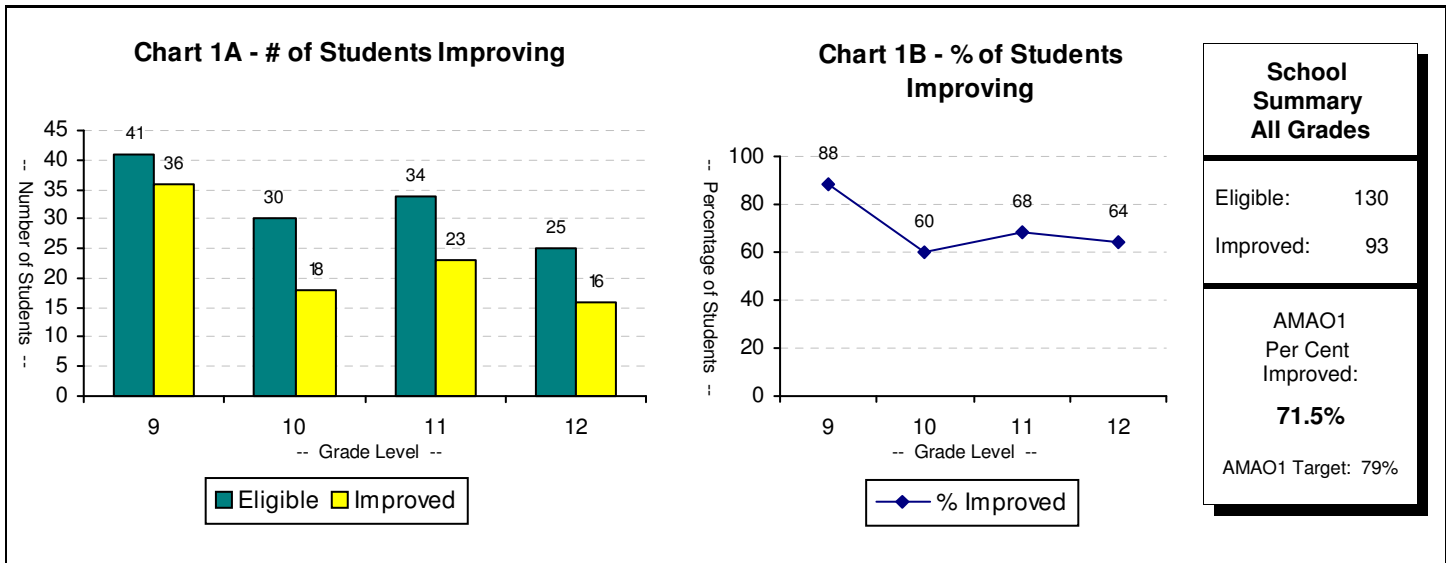
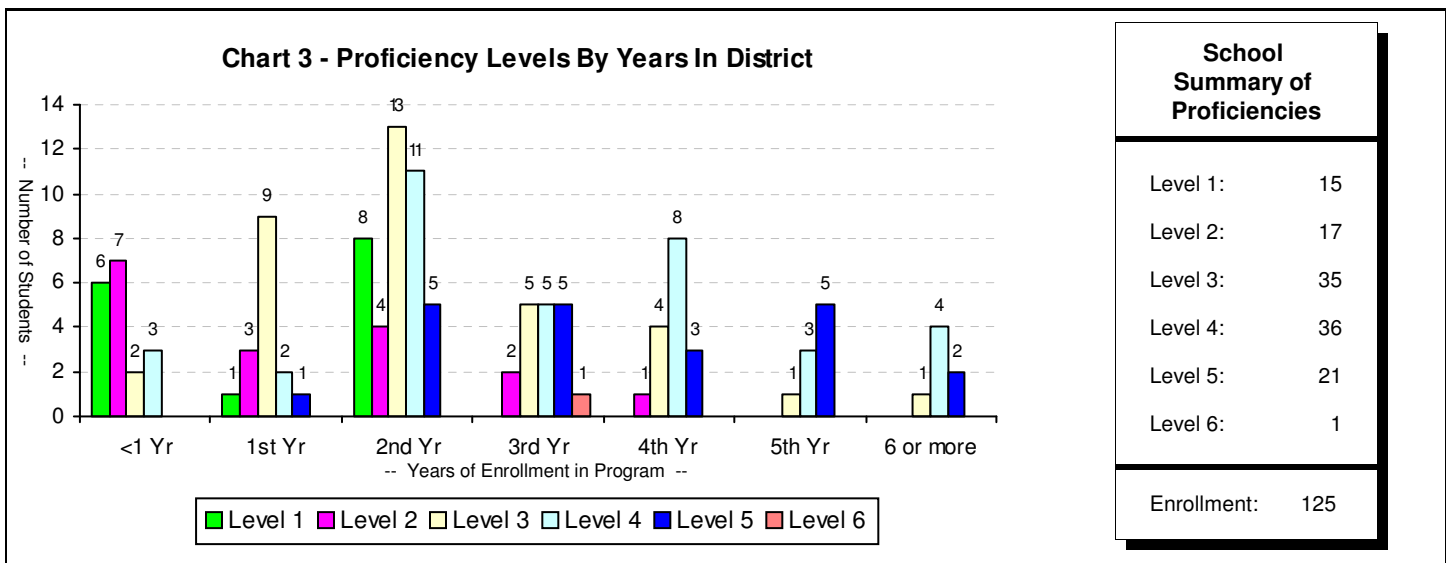
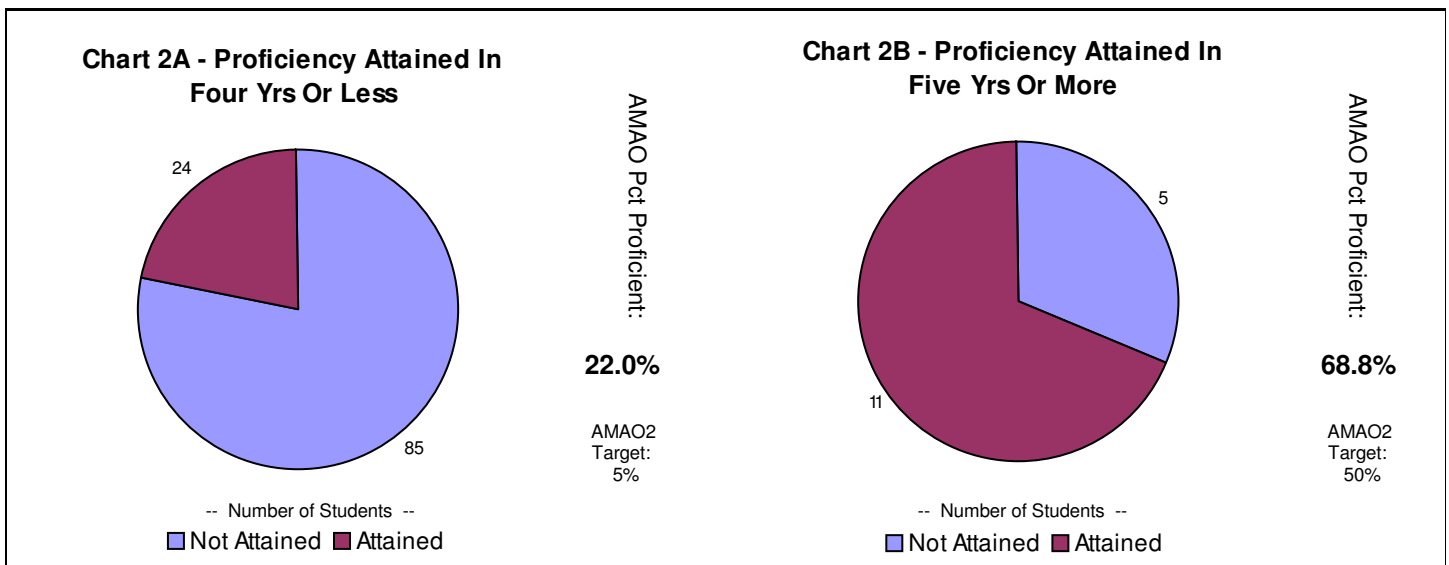
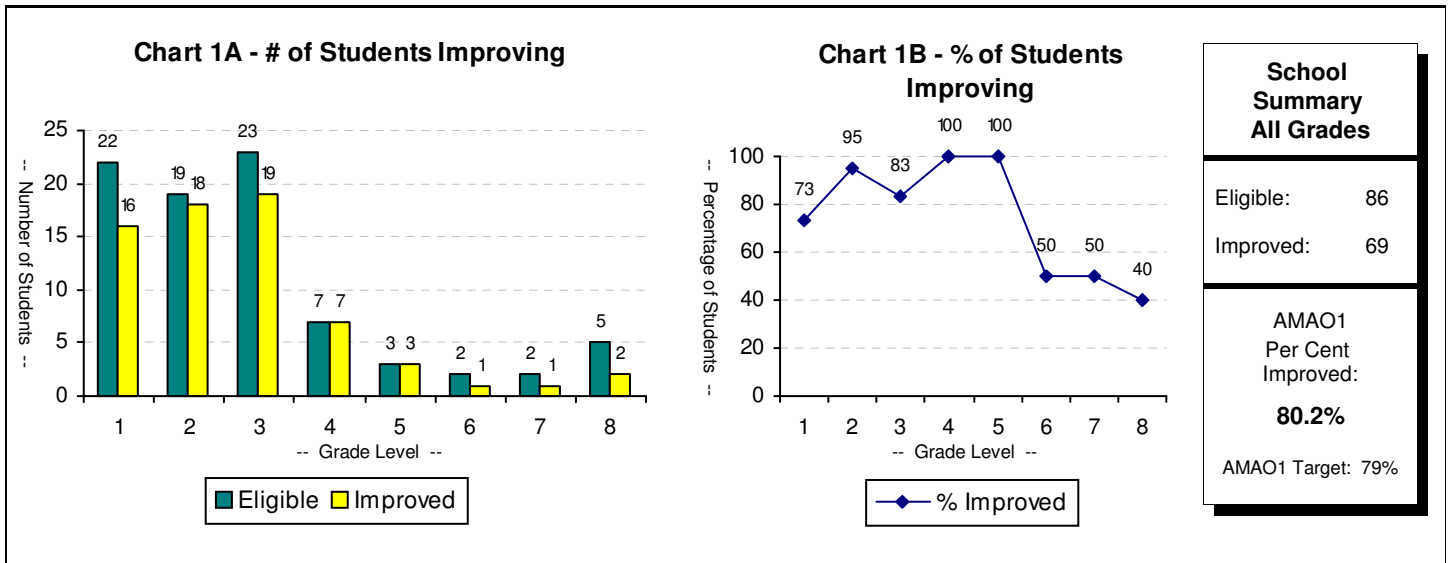


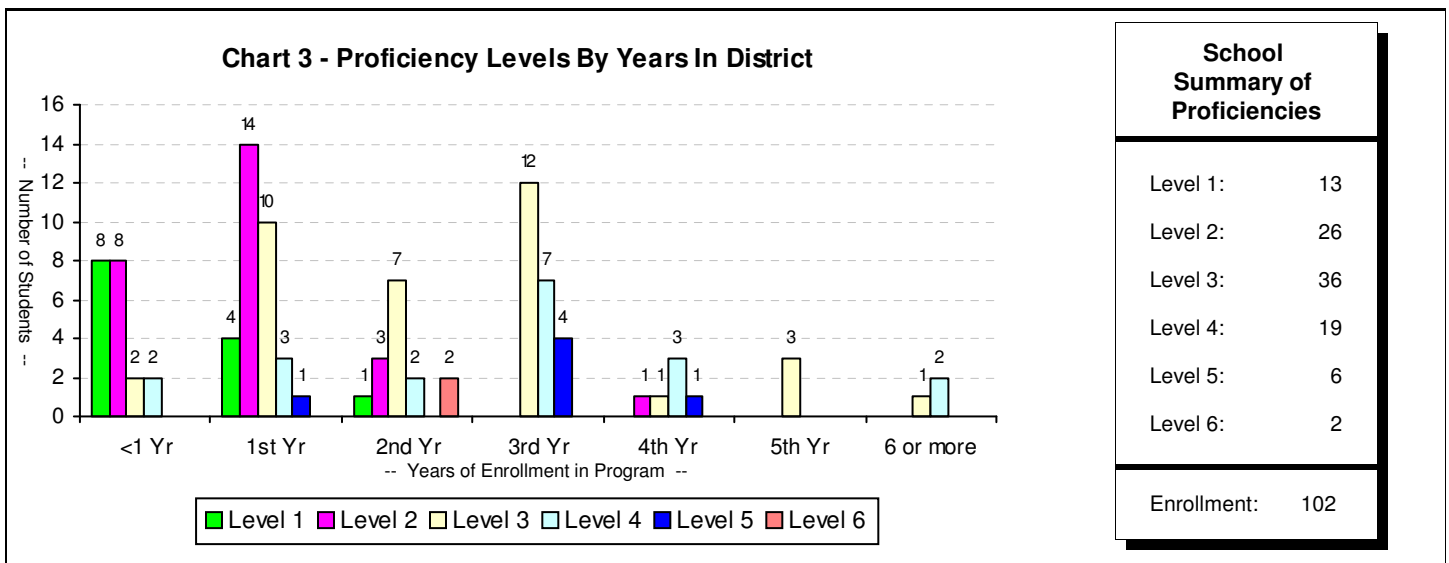
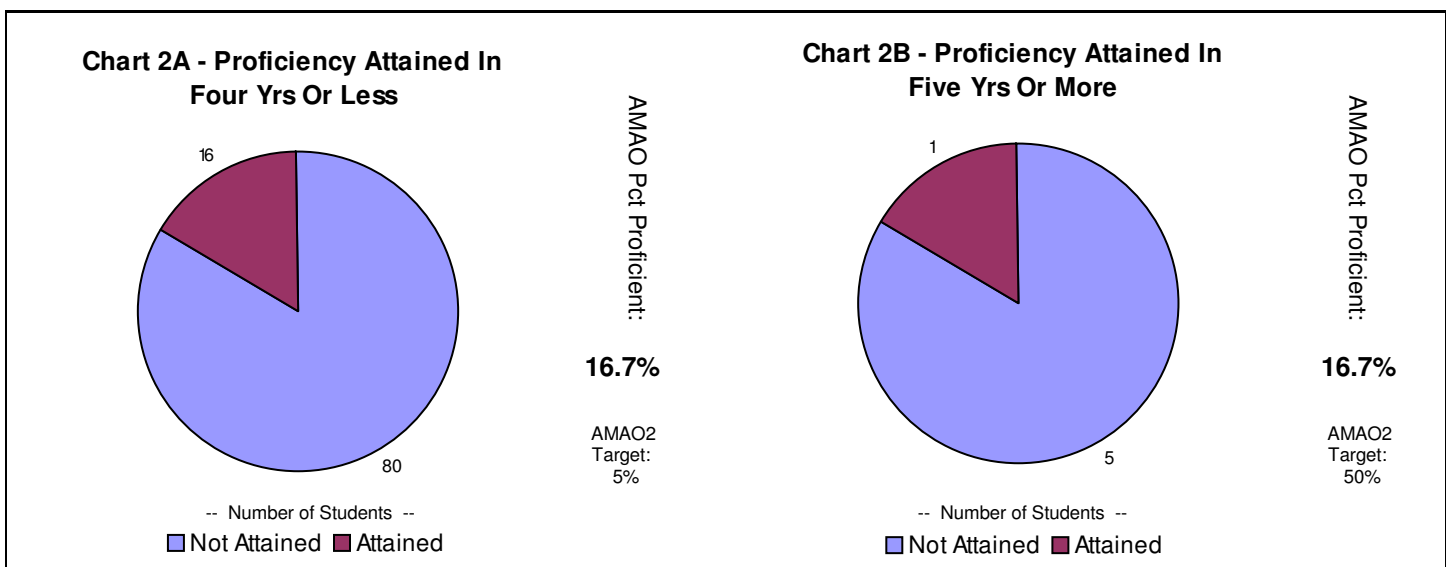
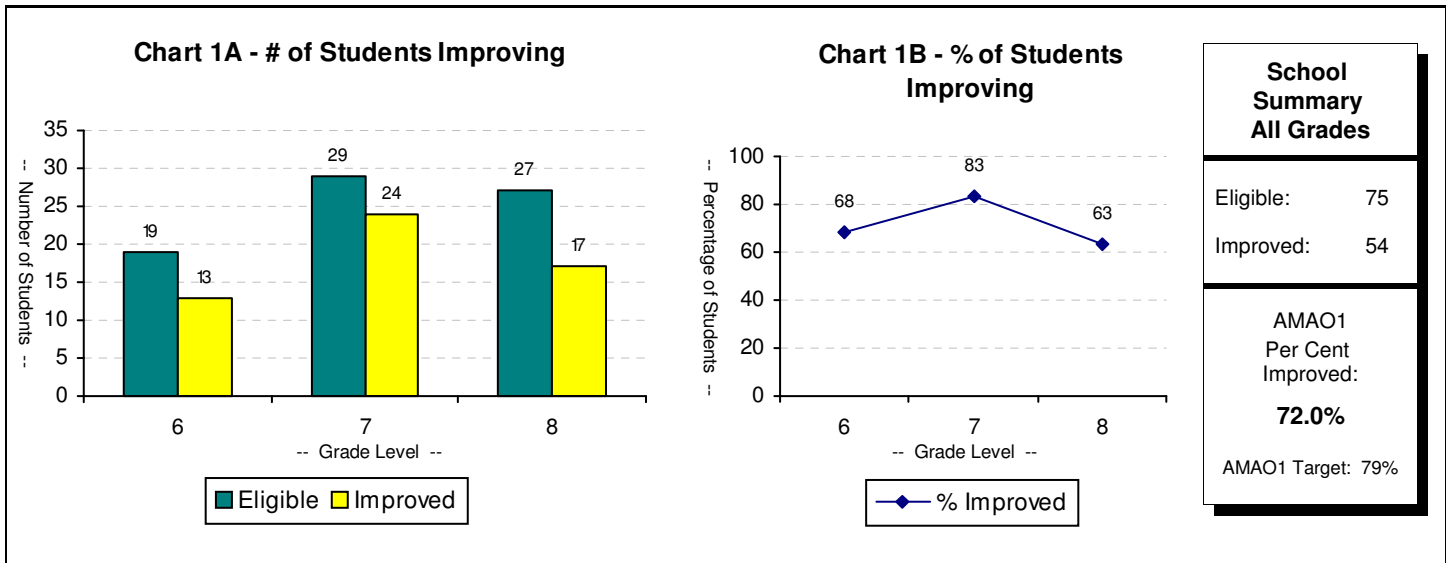
AMA01: Annual Measurable Achievement Objective for LEP Students Making Progress in Acquiring English Language Proficiency for 2012-2013 School Year
AMA02: AMAO for LEP Students in Attaining English Language Proficiency in Two Cohorts: Up to Four Full Years in Program or Five or More Full Years in Program



AMAO1: Annual Measurable Achievement Objective for LEP Students Making Progress in Acquiring English Language Proficiency for 2012-2013 School Year
AMAO2: AMAO for LEP Students in Attaining English Language Proficiency in Two Cohorts: Up to Four Full Years in Program or Five or More Full Years in Program

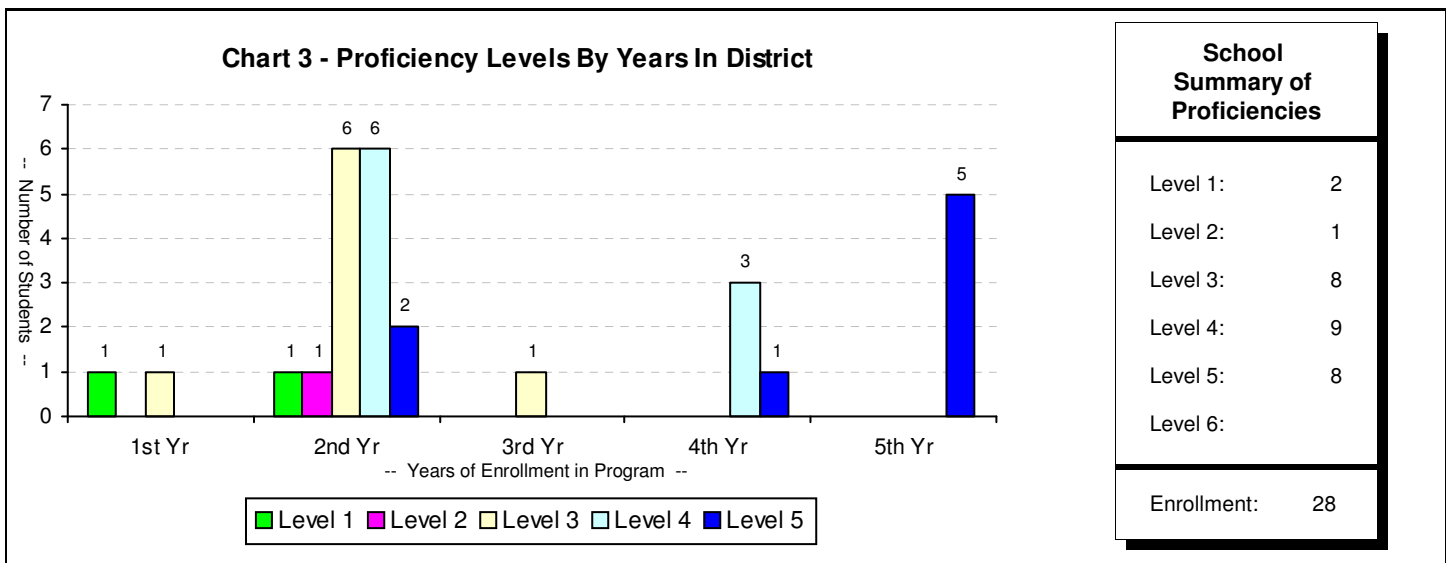
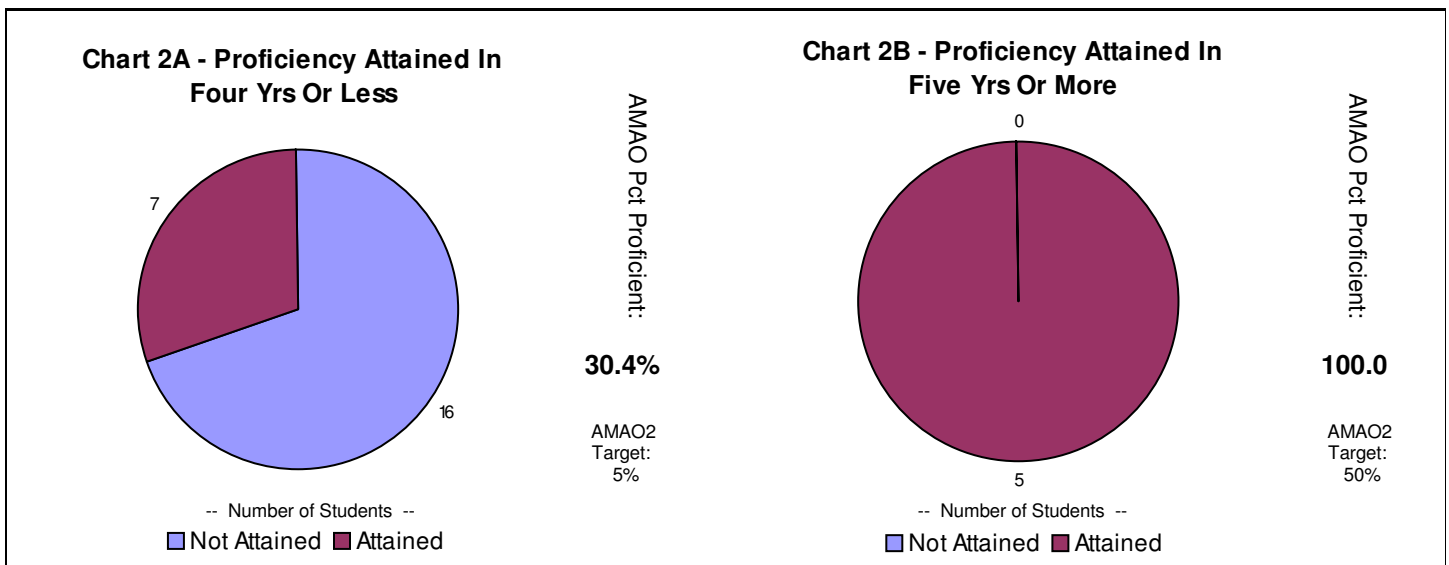
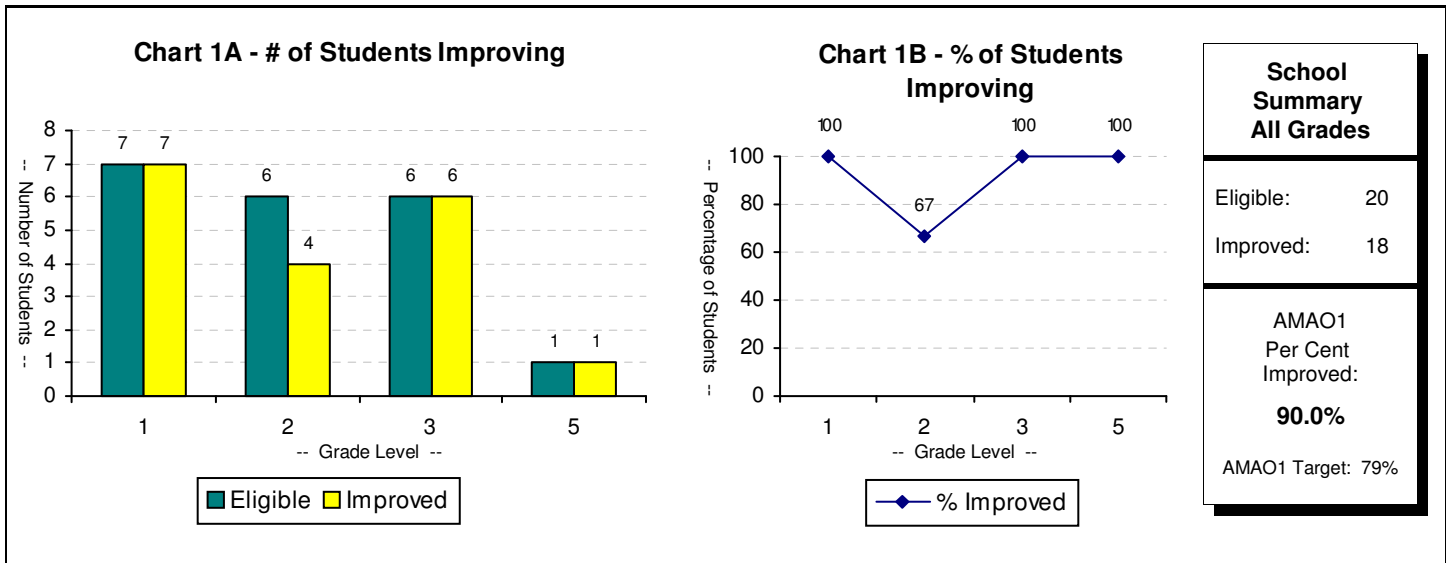


AMA01: Annual Measurable Achievement Objective for LEP Students Making Progress in Acquiring English Language Proficiency for 2012-2013 School Year
AMA02: AMAO for LEP Students in Attaining English Language Proficiency in Two Cohorts: Up to Four Full Years in Program or Five or More Full Years in Program



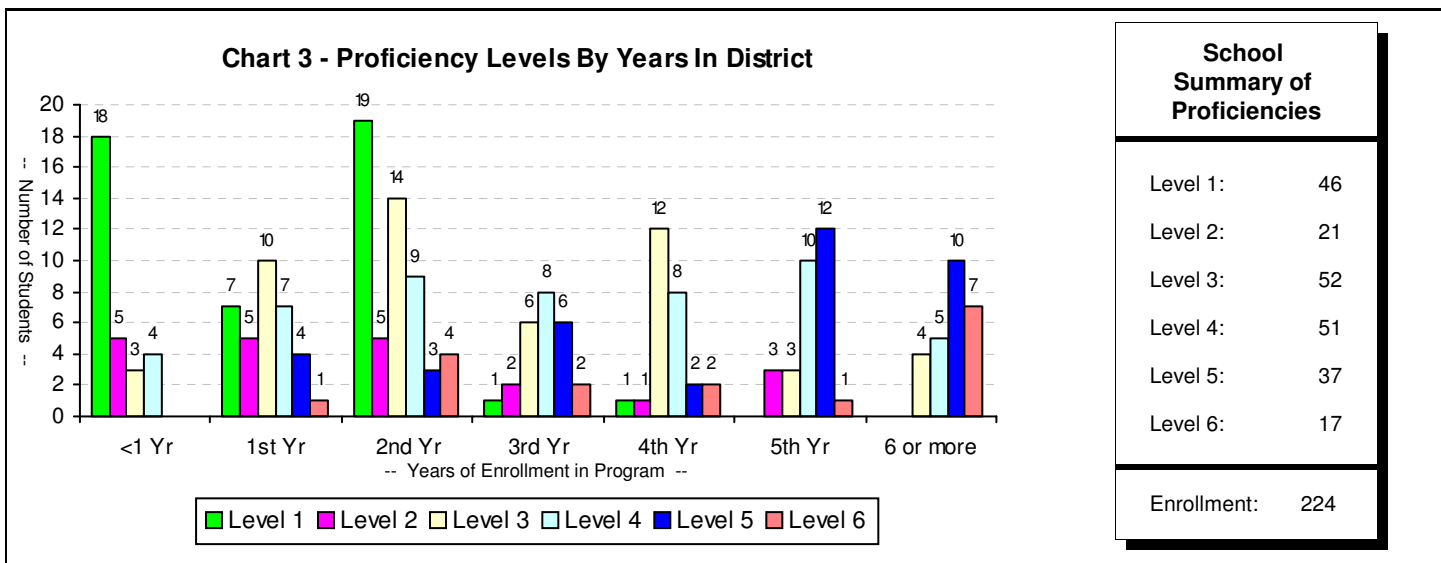
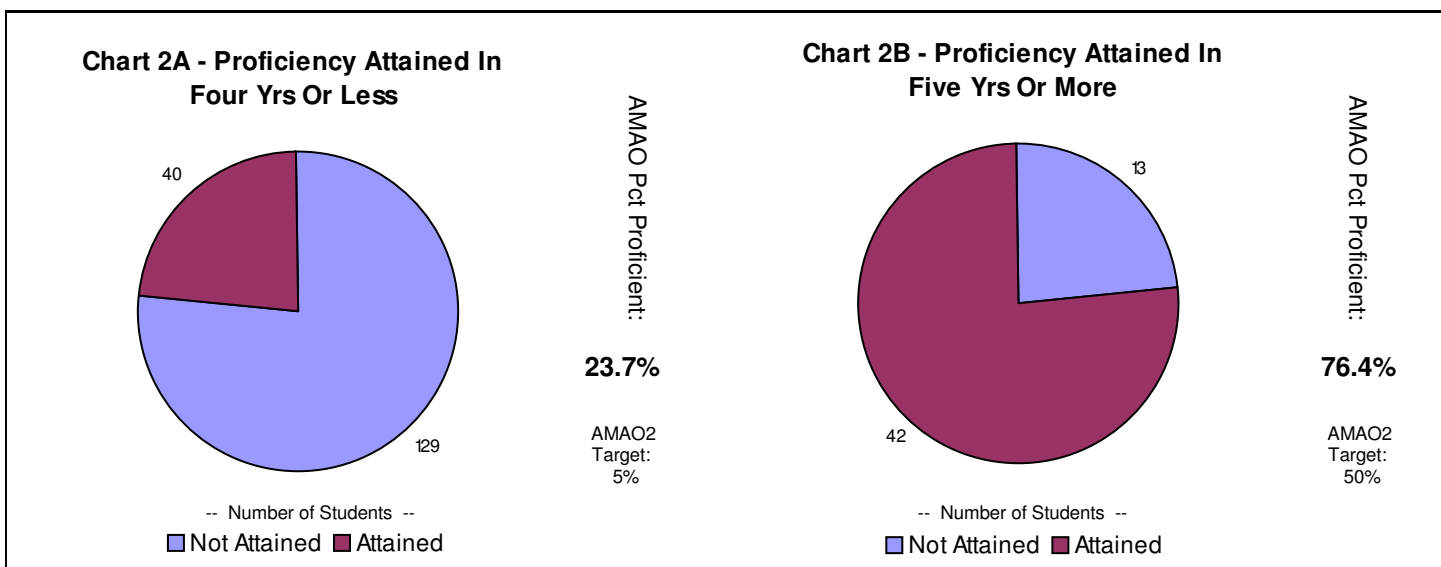
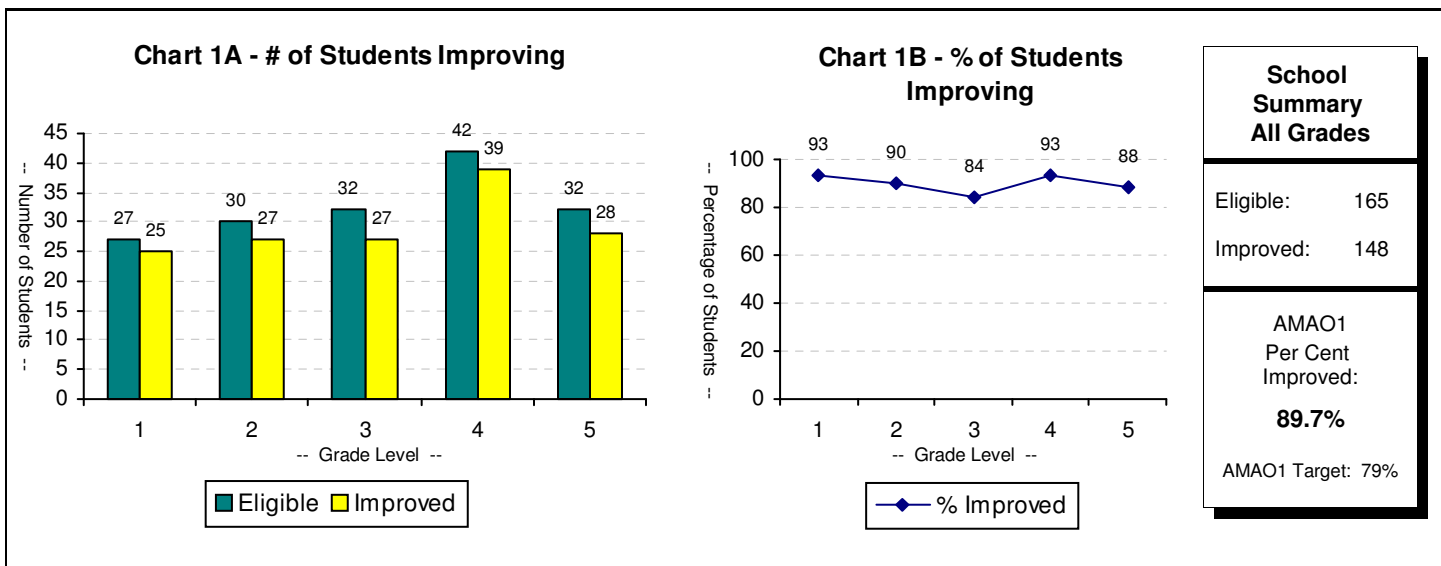
AMA01: Annual Measurable Achievement Objective for LEP Students Making Progress in Acquiring English Language Proficiency for 2012-2013 School Year

AMA02: AMAO for LEP Students in Attaining English Language Proficiency in Two Cohorts: Up to Four Full Years in Program or Five or More Full Years in Program

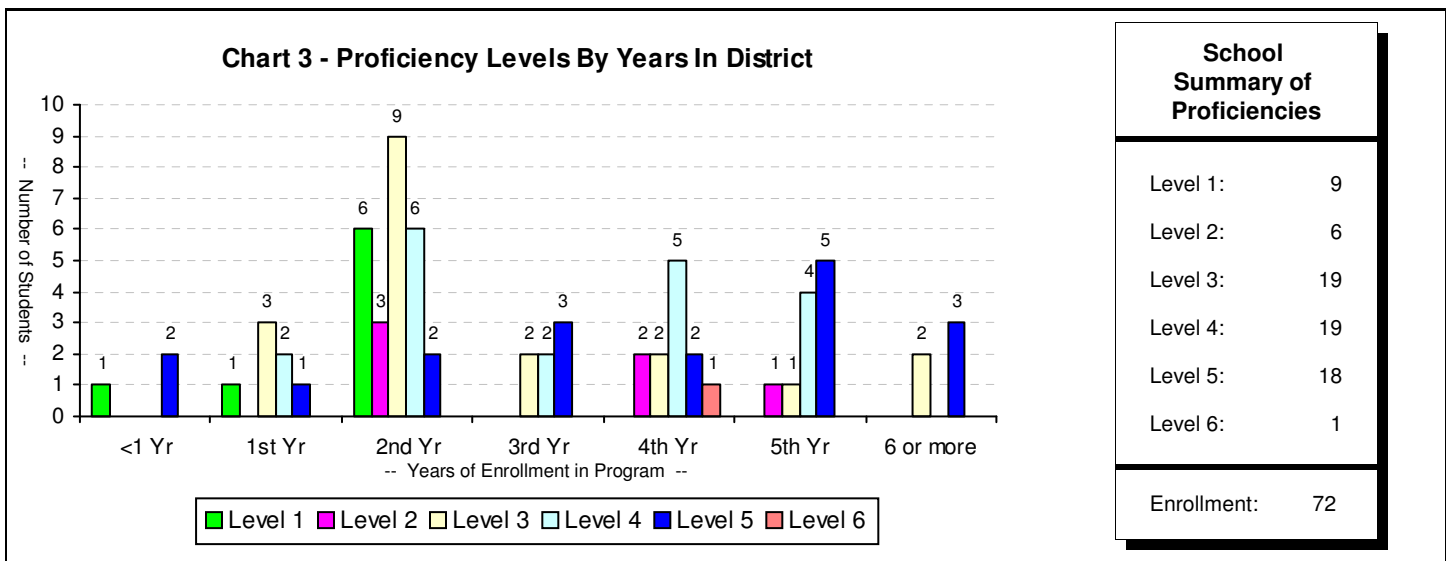
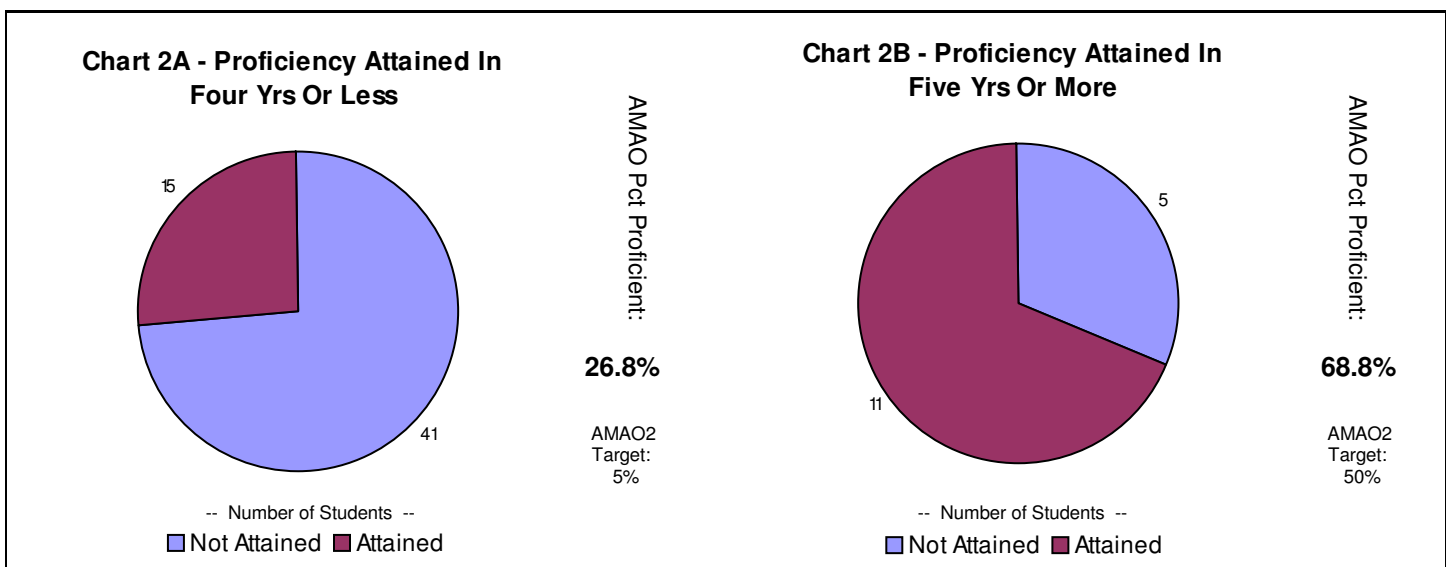
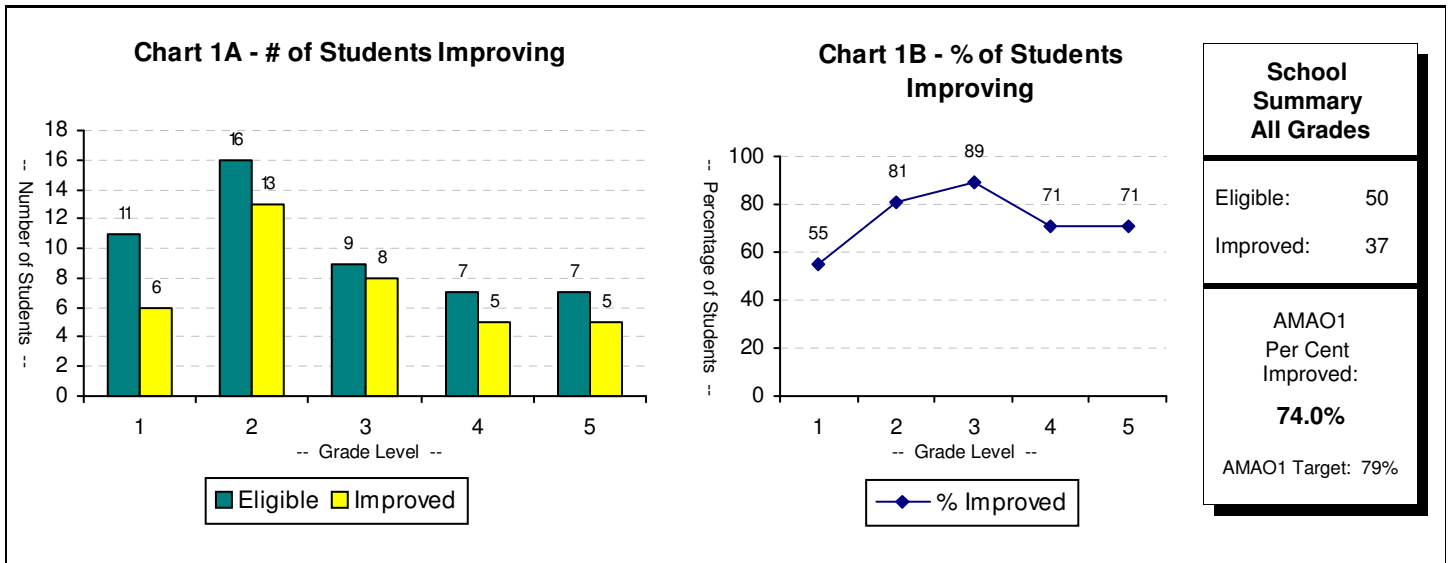


AMA01: Annual Measurable Achievement Objective for LEP Students Making Progress in Acquiring English Language Proficiency for 2012-2013 School Year

AMA02: AMAO for LEP Students in Attaining English Language Proficiency in Two Cohorts: Up to Four Full Years in Program or Five or More Full Years in Program

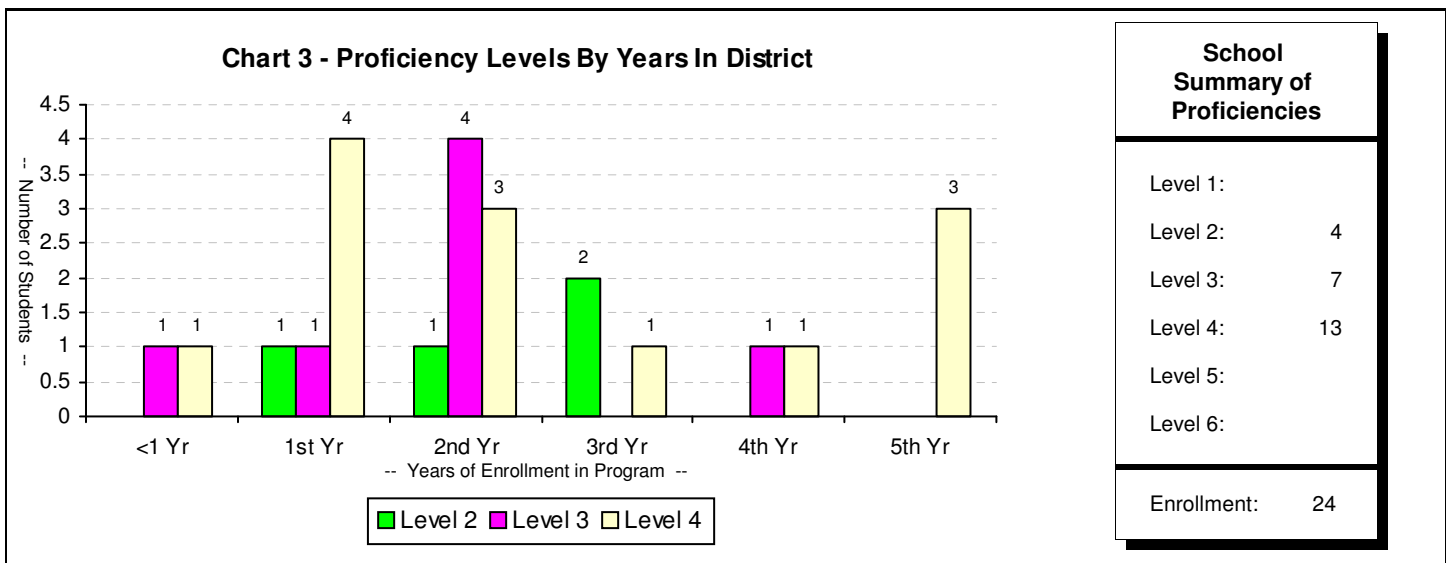
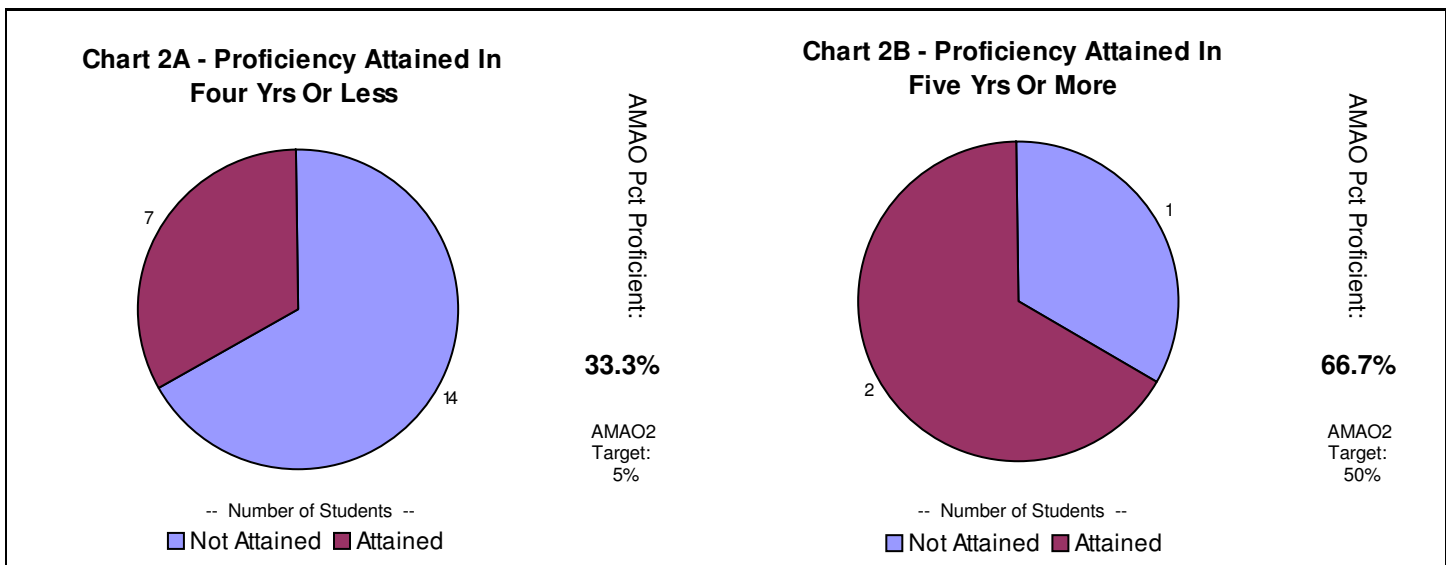
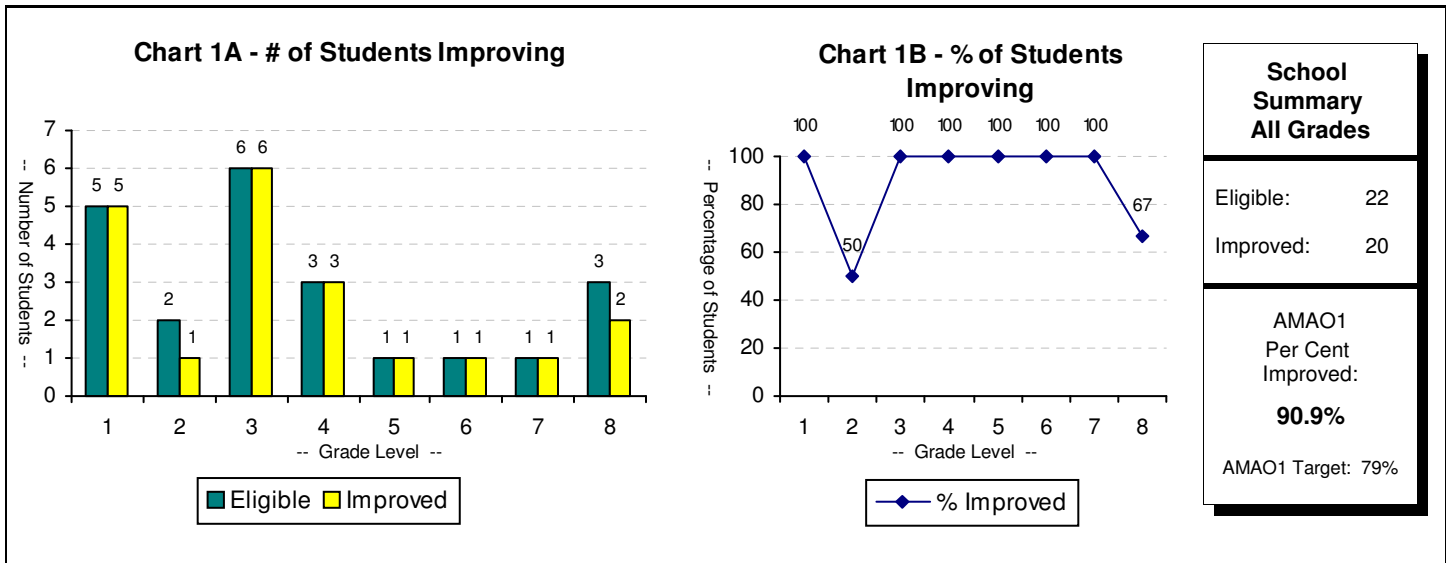


AMA01: Annual Measurable Achievement Objective for LEP Students Making Progress in Acquiring English Language Proficiency for 2012-2013 School Year
AMA02: AMAO for LEP Students in Attaining English Language Proficiency in Two Cohorts: Up to Four Full Years in Program or Five or More Full Years in Program

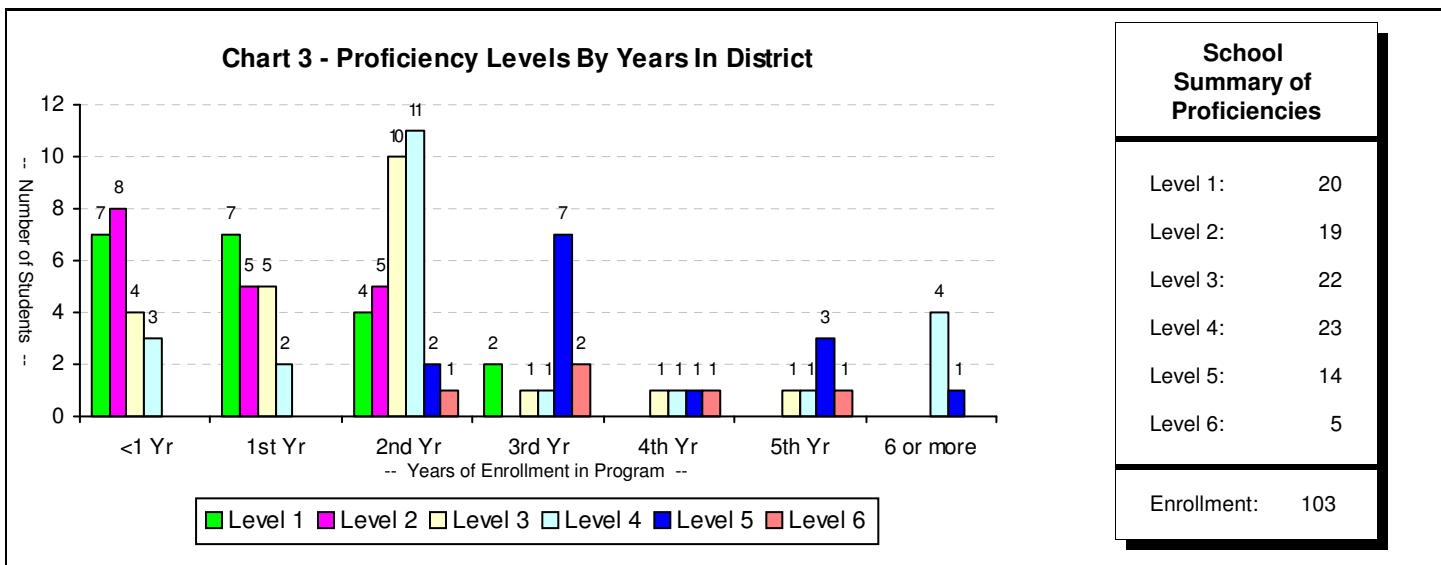
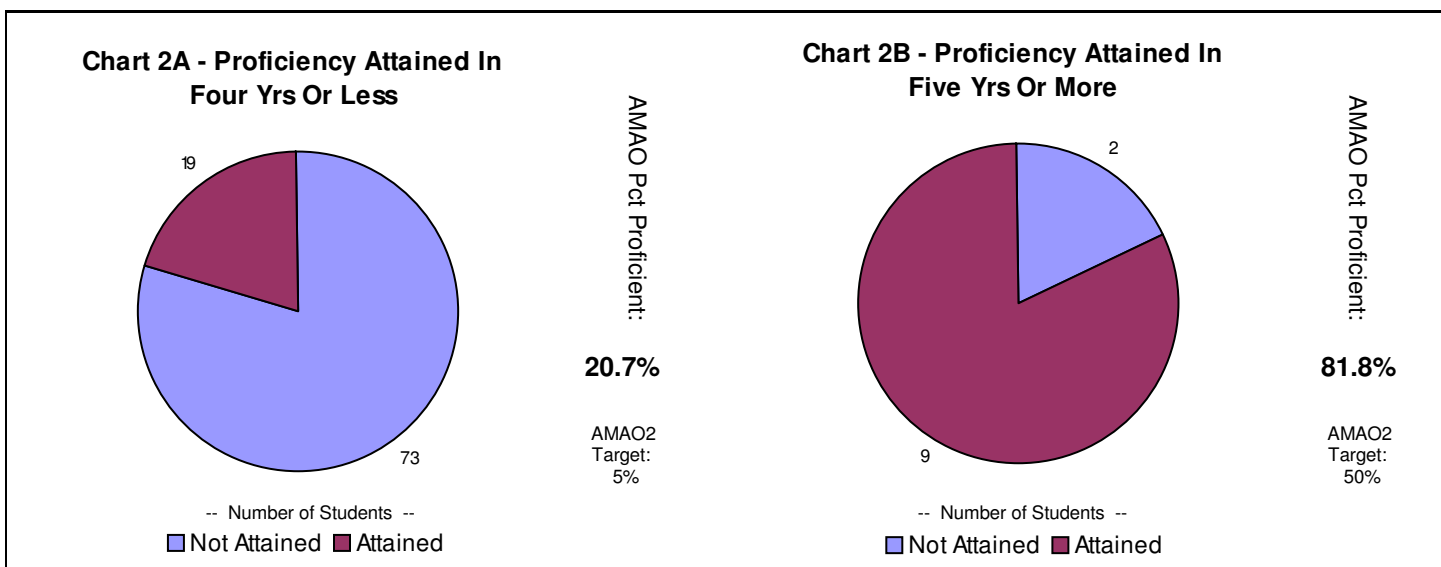
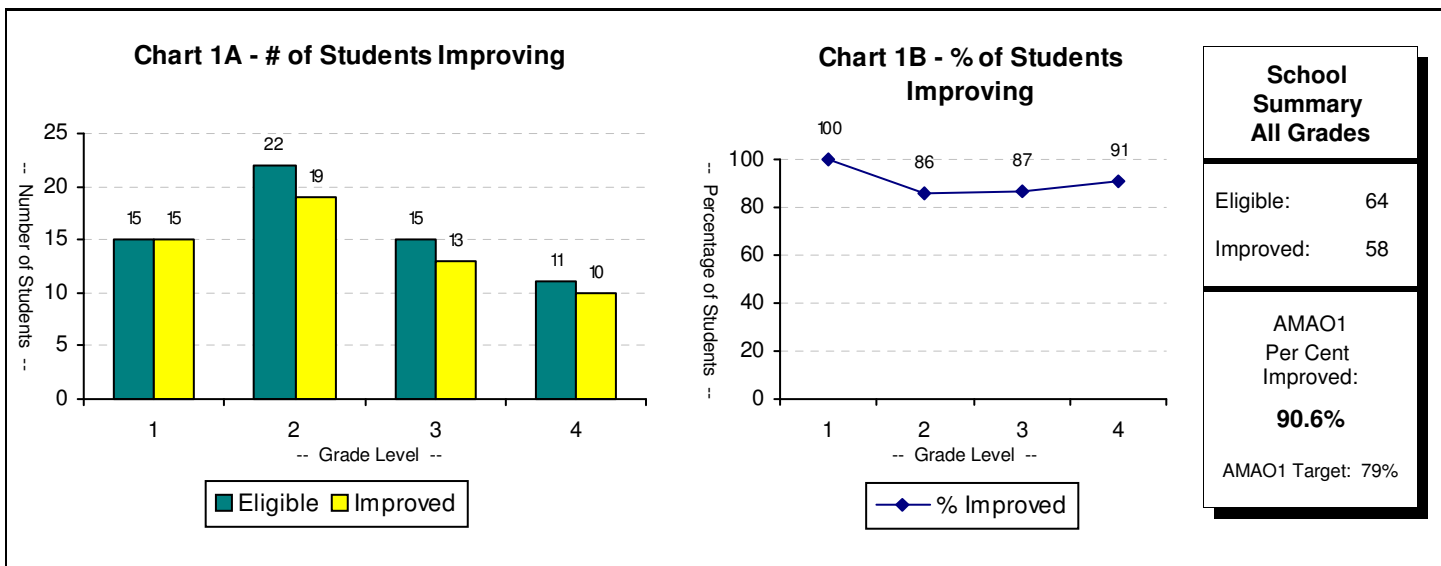


AMA01: Annual Measurable Achievement Objective for LEP Students Making Progress in Acquiring English Language Proficiency for 2012-2013 School Year

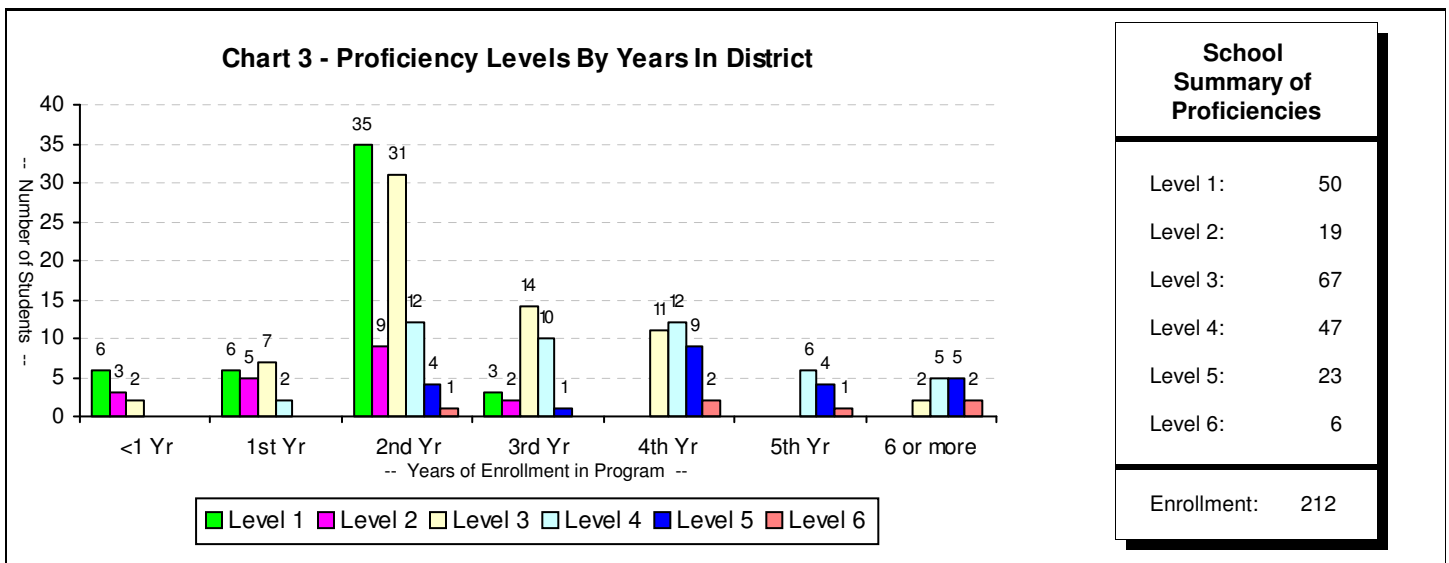
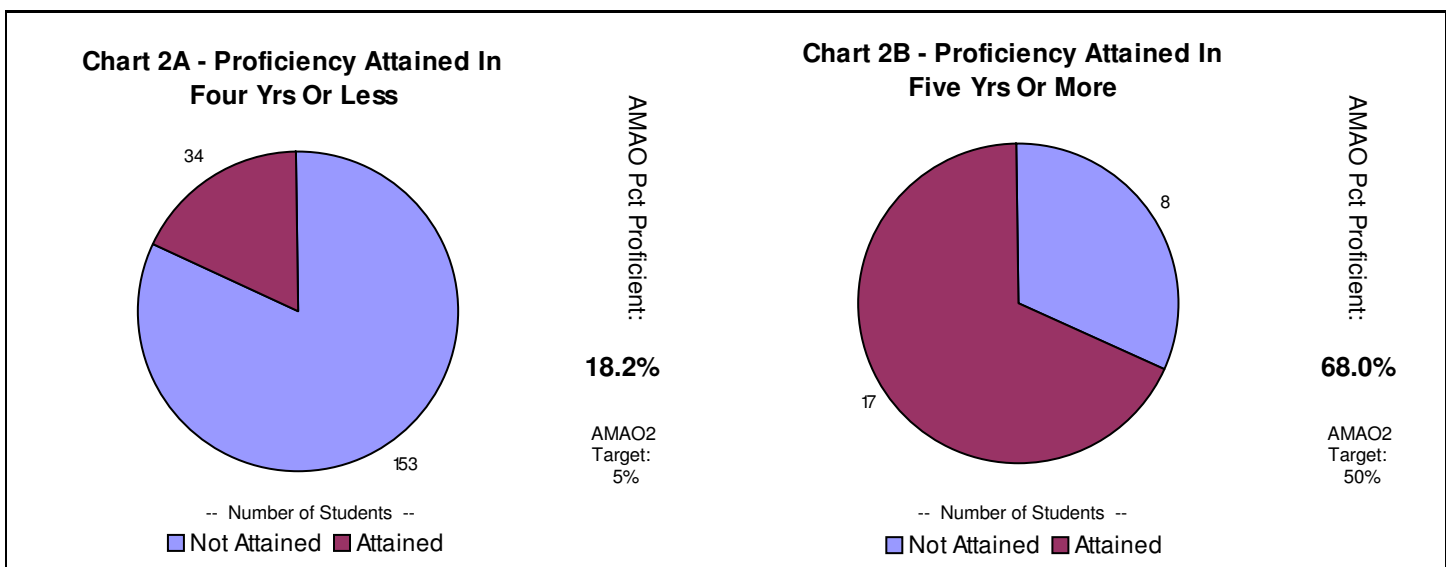
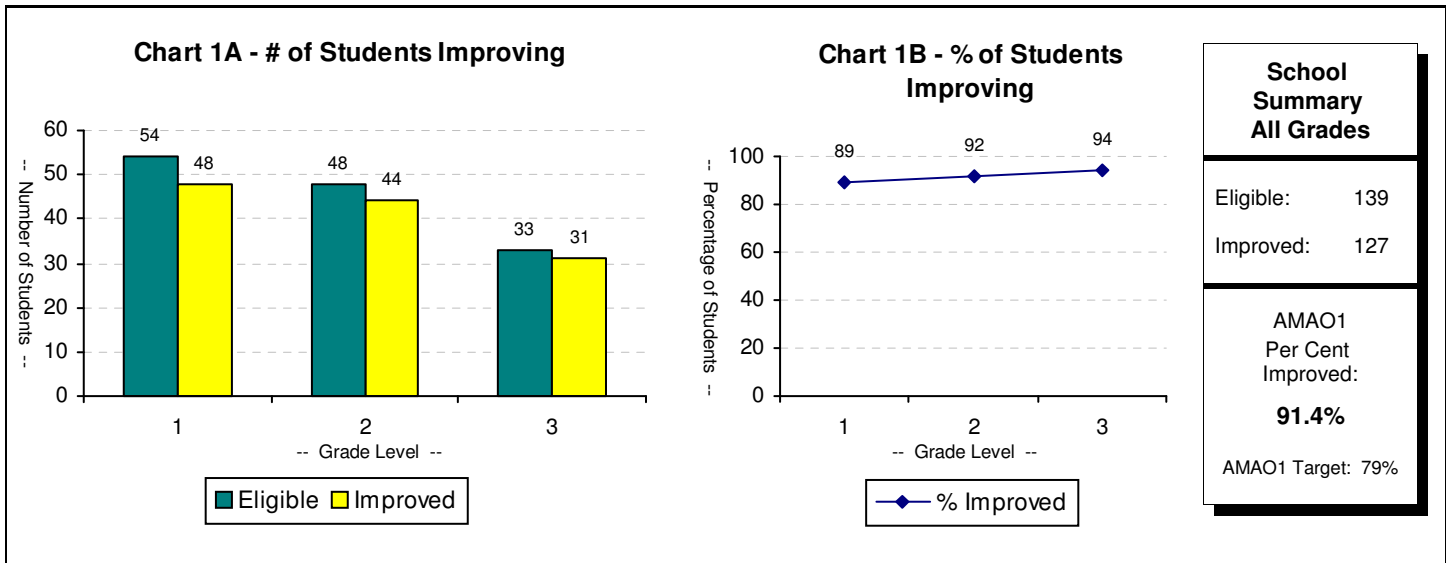
AMA02: AMAO for LEP Students in Attaining English Language Proficiency in Two Cohorts: Up to Four Full Years in Program or Five or More Full Years in Program



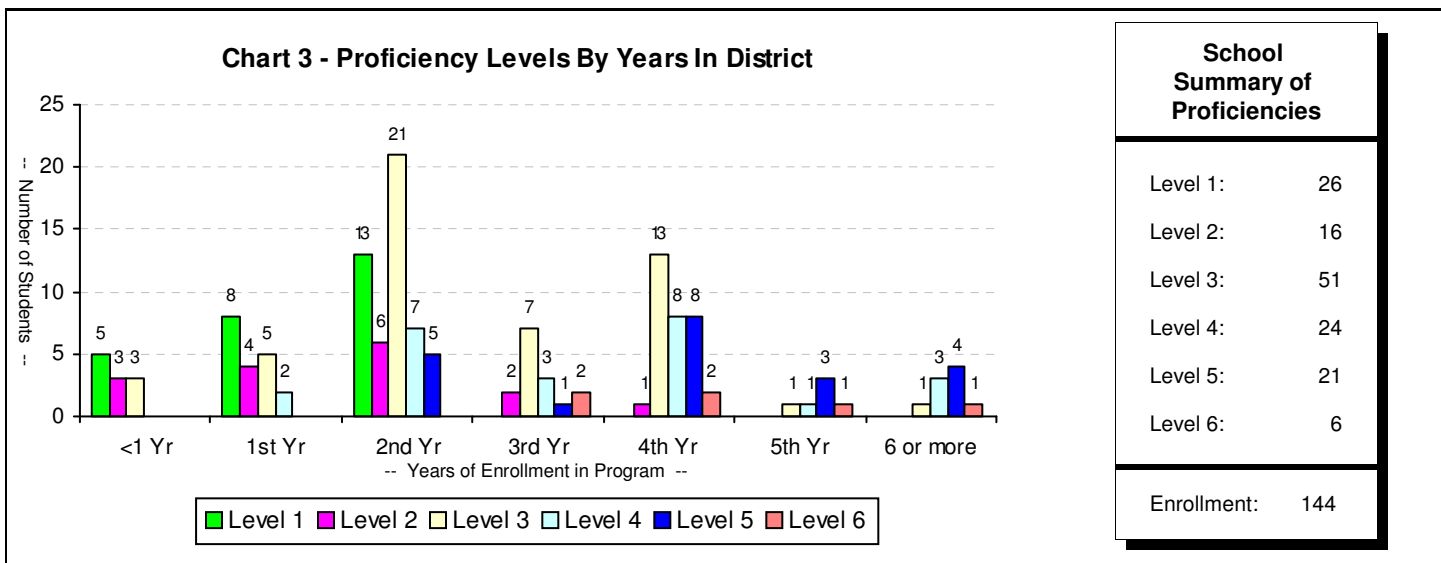
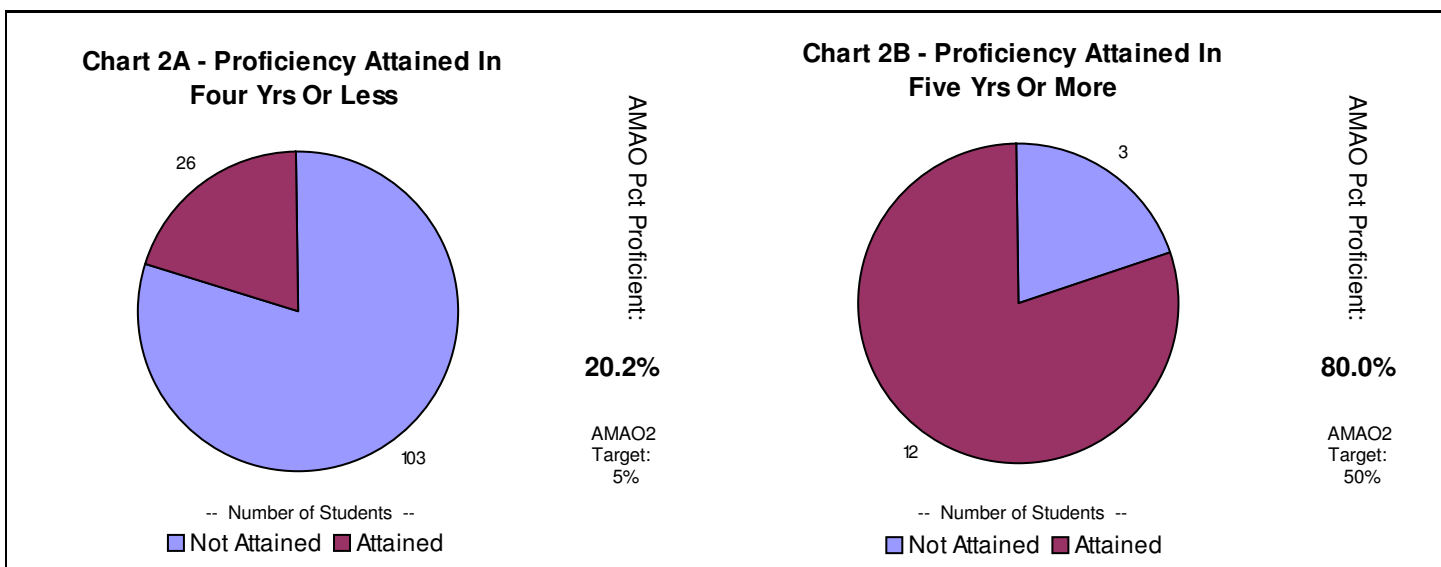
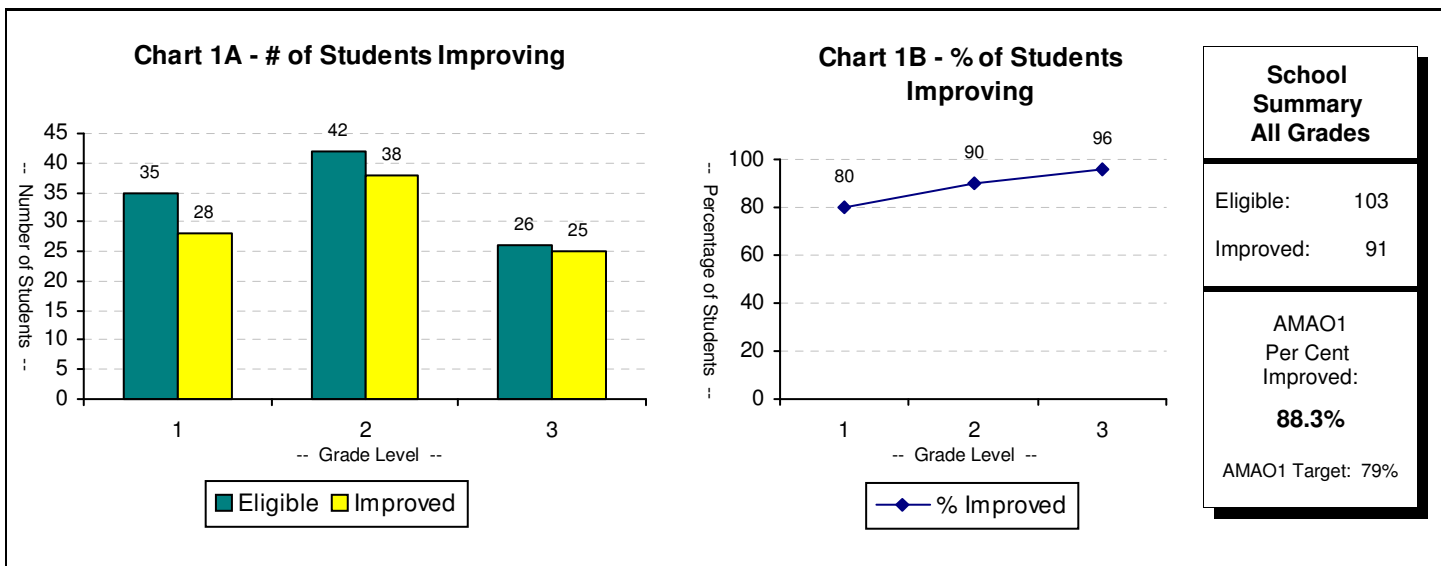
AMA01: Annual Measurable Achievement Objective for LEP Students Making Progress in Acquiring English Language Proficiency for 2012-2013 School Year
AMA02: AMAO for LEP Students in Attaining English Language Proficiency in Two Cohorts: Up to Four Full Years in Program or Five or More Full Years in Program



AMA01: Annual Measurable Achievement Objective for LEP Students Making Progress in Acquiring English Language Proficiency for 2012-2013 School Year
AMA02: AMAO for LEP Students in Attaining English Language Proficiency in Two Cohorts: Up to Four Full Years in Program or Five or More Full Years in Program



AMA01: Annual Measurable Achievement Objective for LEP Students Making Progress in Acquiring English Language Proficiency for 2012-2013 School Year
AMA02: AMAO for LEP Students in Attaining English Language Proficiency in Two Cohorts: Up to Four Full Years in Program or Five or More Full Years in Program



AMA01: Annual Measurable Achievement Objective for LEP Students Making Progress in Acquiring English Language Proficiency for 2012-2013 School Year

AMA02: AMAO for LEP Students in Attaining English Language Proficiency in Two Cohorts: Up to Four Full Years in Program or Five or More Full Years in Program

Chart 1A - # of Students Improving

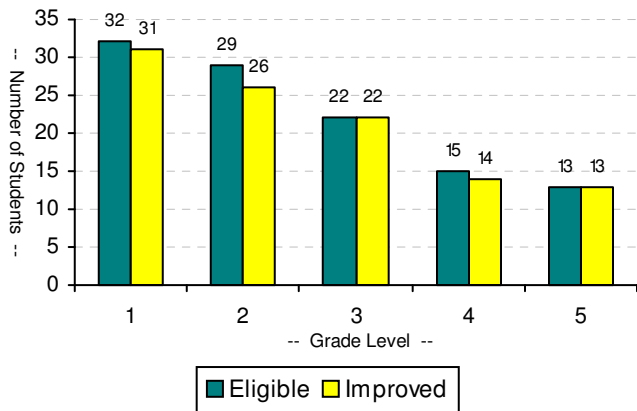
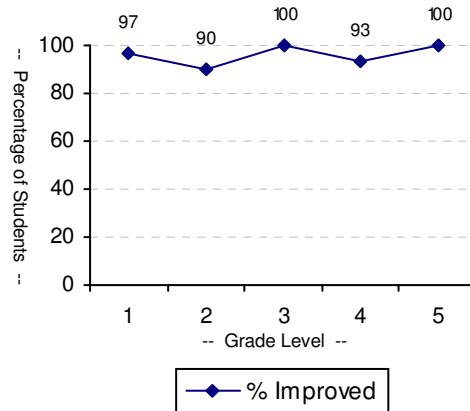


Chart 1B - % of Students Improving



School Summary All Grades

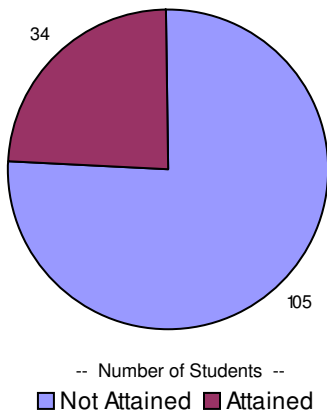
Eligible: 113
Improved: 108

AMA01 Per Cent Improved:

95.6%

AMA01 Target: 79%

Chart 2A - Proficiency Attained In Four Yrs Or Less

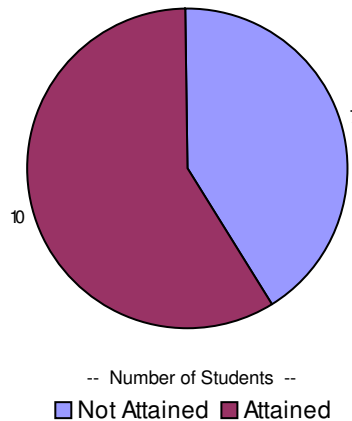


AMA02 Pct Proficient:

24.5%

AMA02 Target: 5%

Chart 2B - Proficiency Attained In Five Yrs Or More

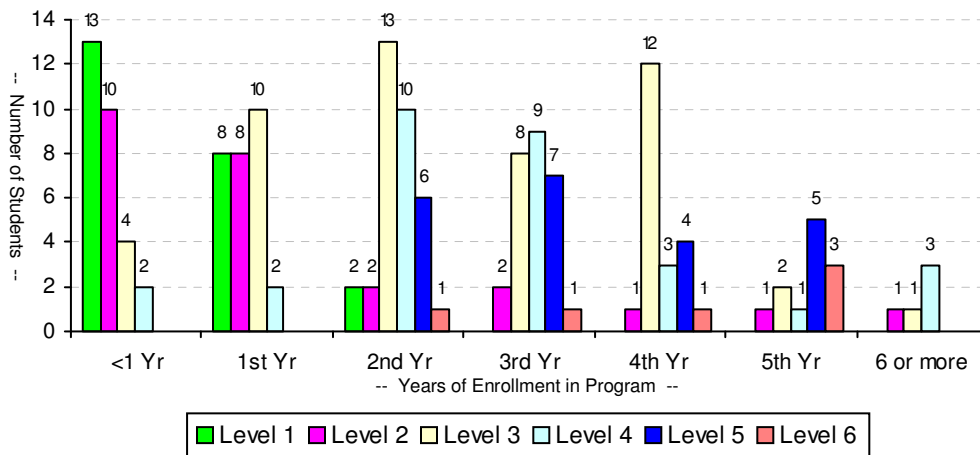


AMA02 Pct Proficient:

58.8%

AMA02 Target: 50%

Chart 3 - Proficiency Levels By Years In District



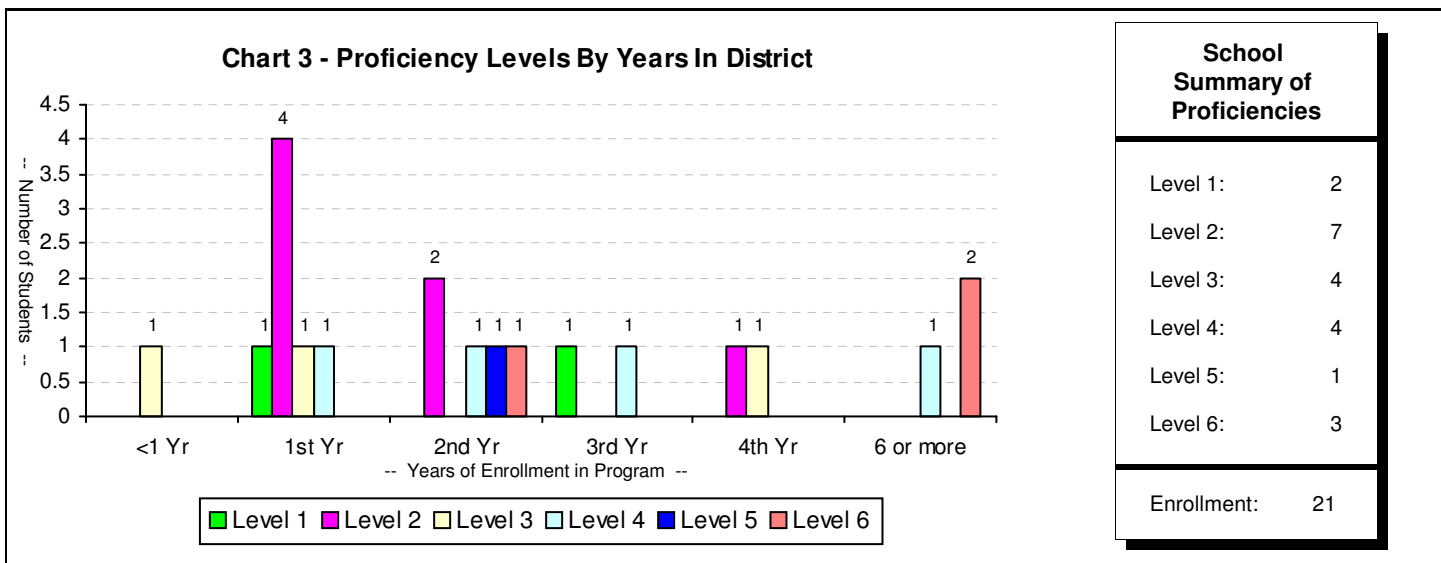
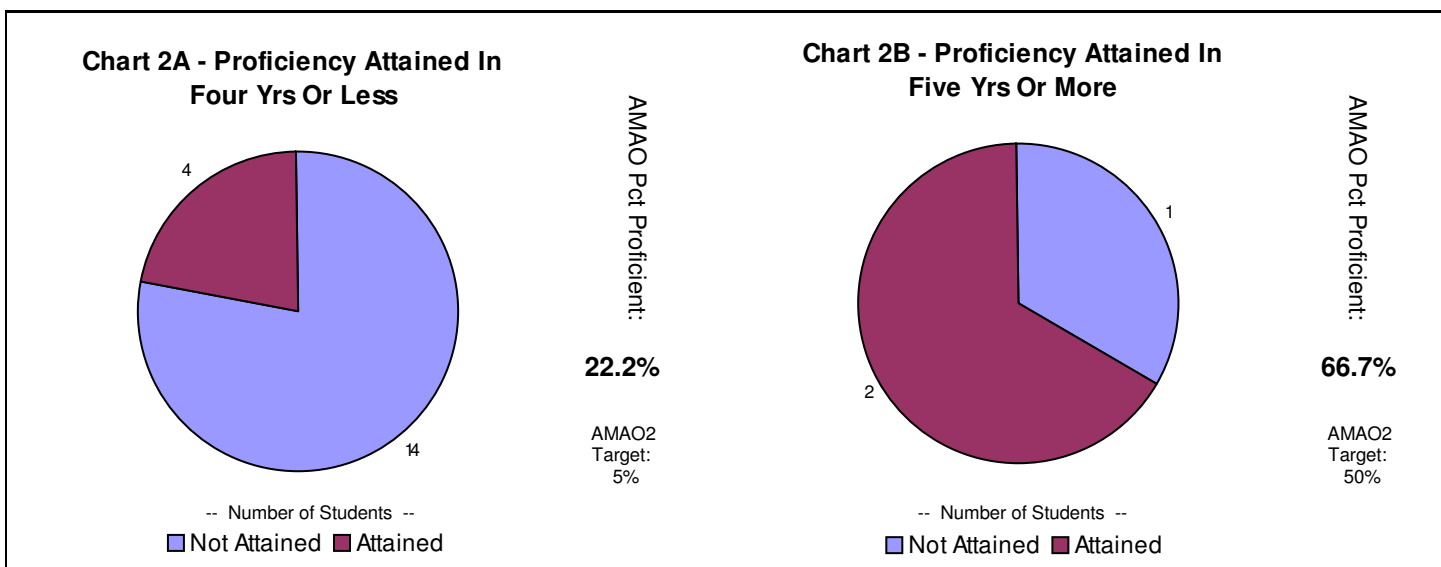
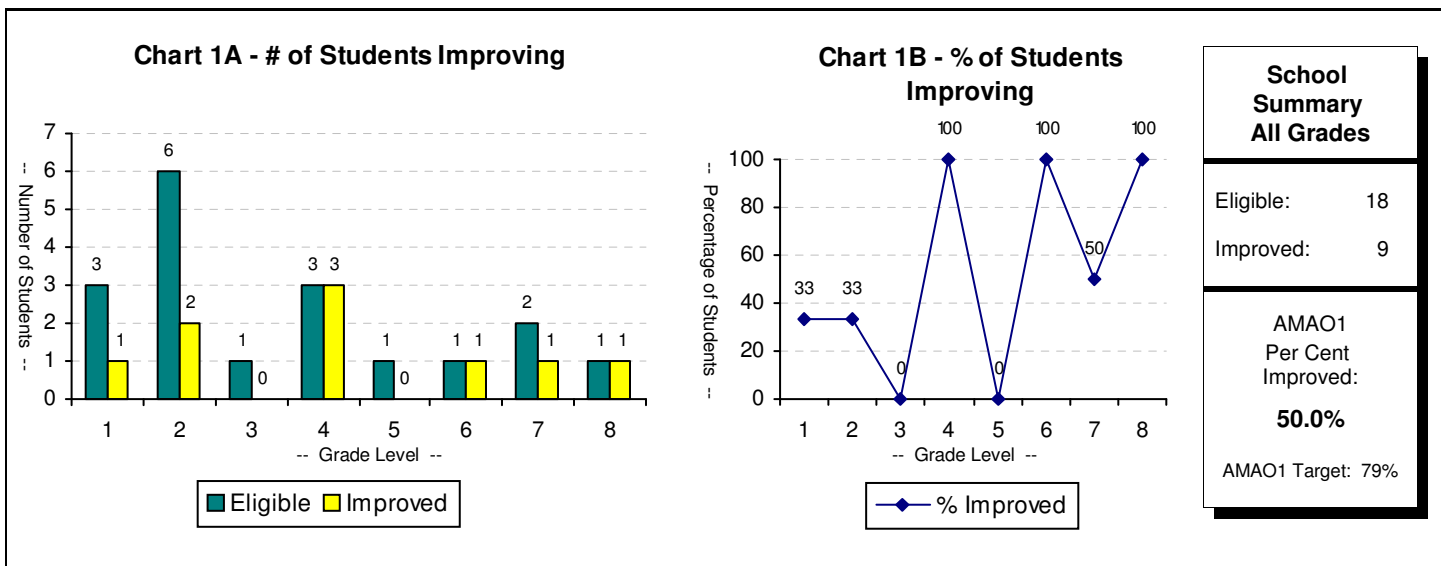
School Summary of Proficiencies

Level 1: 23
Level 2: 25
Level 3: 50
Level 4: 30
Level 5: 22
Level 6: 6

Enrollment: 156

AMA01: Annual Measurable Achievement Objective for LEP Students Making Progress in Acquiring English Language Proficiency for 2012-2013 School Year

AMA02: AMAO for LEP Students in Attaining English Language Proficiency in Two Cohorts: Up to Four Full Years in Program or Five or More Full Years in Program



AMA01: Annual Measurable Achievement Objective for LEP Students Making Progress in Acquiring English Language Proficiency for 2012-2013 School Year
AMA02: AMAO for LEP Students in Attaining English Language Proficiency in Two Cohorts: Up to Four Full Years in Program or Five or More Full Years in Program